

# For Lease

4837 N Dixie Highway  
Fort Lauderdale, FL



## OFFICE/RETAIL SPACE AVAILABLE - PARK PLAZA

### PROPERTY HIGHLIGHTS

- ◆ 4,700 Square Feet Available
- ◆ 11,435 Square Feet Available
- ◆ Tenant Pays Own Utilities, Trash, Janitorial
- ◆ Large Parking Area
- ◆ Zoned B-2
- ◆ General Office Use, Medical, Call Center Use
- ◆ \$24.50 PSF Gross



**THE FITZGERALD GROUP**  
COMMERCIAL REAL ESTATE

**The Fitzgerald Group**  
2200 W. Commercial Blvd., Suite 103  
Fort Lauderdale, FL 33309  
[www.fitzgeraldgroup.com](http://www.fitzgeraldgroup.com)

### For Lease Information:

**Brad Fitzgerald**

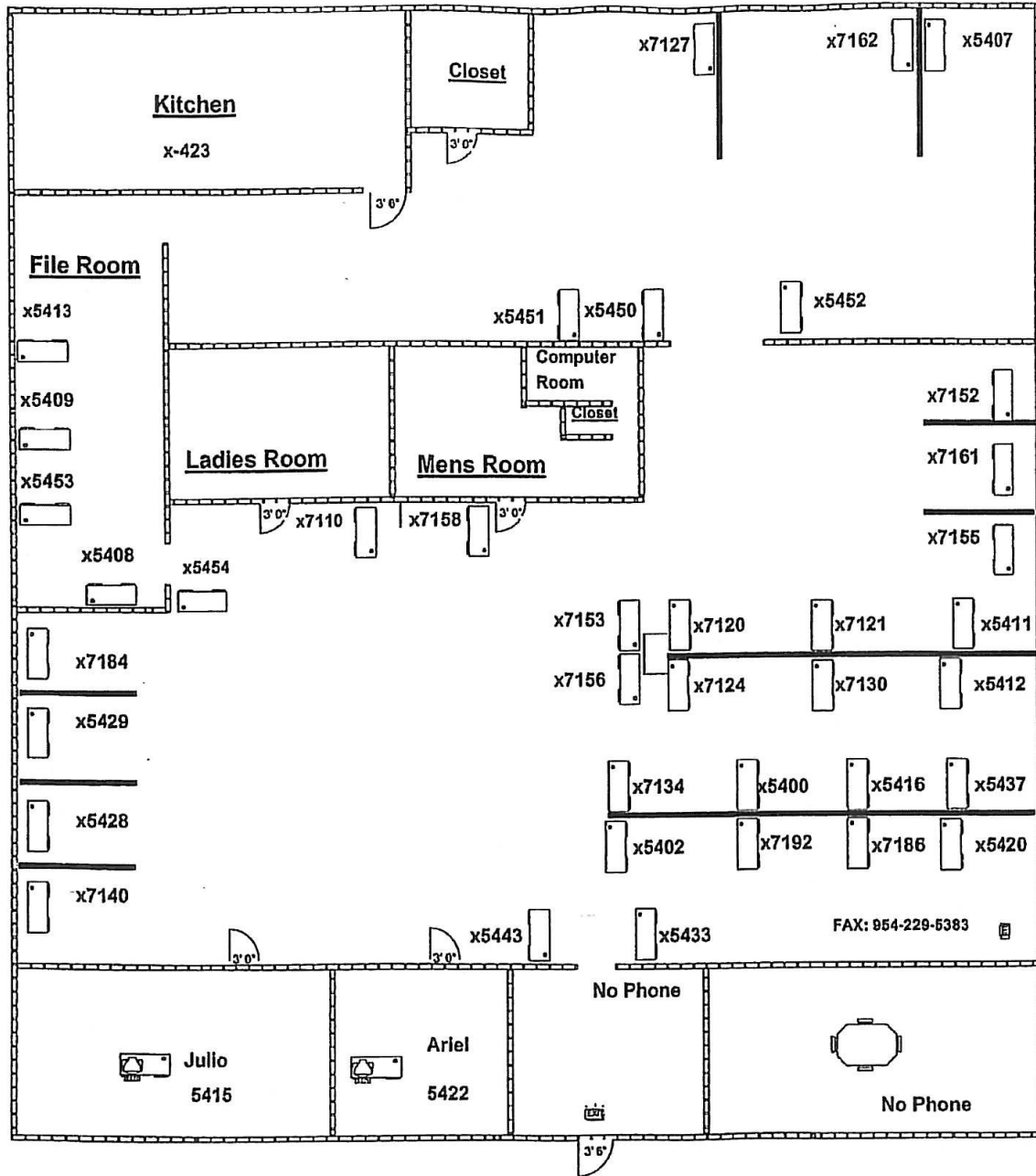
O: 954.760.9300

[brad@fitzgeraldgroup.com](mailto:brad@fitzgeraldgroup.com)

# For Lease

OFFICE/RETAIL - 4,700 Sq. Ft.

4837 N Dixie Highway  
Fort Lauderdale, FL



**THE FITZGERALD GROUP**  
COMMERCIAL REAL ESTATE

**The Fitzgerald Group**  
2200 W. Commercial Blvd., Suite 103  
Fort Lauderdale, FL 33309  
[www.fitzgeraldgroup.com](http://www.fitzgeraldgroup.com)

## For Lease Information:

**Brad Fitzgerald**  
O: 954.760.9300  
[brad@fitzgeraldgroup.com](mailto:brad@fitzgeraldgroup.com)