

For Lease

1800 Eller Drive
Fort Lauderdale, FL 33316



CONVENIENT | EAST FORT LAUDERDALE LOCATION

This conveniently located 6 story office building is ideally located moments from all major roadways.

PROPERTY HIGHLIGHTS:

- High speed fiber internet ready
- Abundance of free parking
- Excellent location on the East end of I-595 and Port Everglades
- Just outside of port security
- Direct access to I-595 and Fort Lauderdale Hollywood Airport
- Full service café on site

For Lease Information:
Brad Fitzgerald
O: 954.760.9300
brad@fitzgeraldgroup.com

The Fitzgerald Group | Fort Lauderdale
1800 Eller Drive | Suite 212
Fort Lauderdale, FL 33316
www.fitzgeraldgroup.com



THE FITZGERALD GROUP
COMMERCIAL REAL ESTATE

Any information herewith is obtained from sources we consider reliable. However, we are not responsible for misstatement of facts, errors, omissions, prior sale, and withdrawal from market modification of mortgage commitment, terms and conditions or change in price without prior notice. The information supplied herein is for informational purposes only and shall not constitute a warranty of assurance that said information is correct. Any person intending to rely upon the information supplied herein should verify said information independently.

For Lease

1800 Eller Drive
Fort Lauderdale, FL 33316



Highwoods Building Inventory

Suite 205	1,848 SF	\$32.00 PSF
Suite 402	3,540 SF	\$32.00 PSF
Suite 416	619 SF	\$32.00 PSF
Suite 501	8,280 SF	\$32.00 PSF



Brad Fitzgerald
O: 954.760.9300
brad@fitzgeraldgroup.com

The Fitzgerald Group | Fort Lauderdale
1800 Eller Drive | Suite 212
Fort Lauderdale, FL 33316
www.fitzgeraldgroup.com



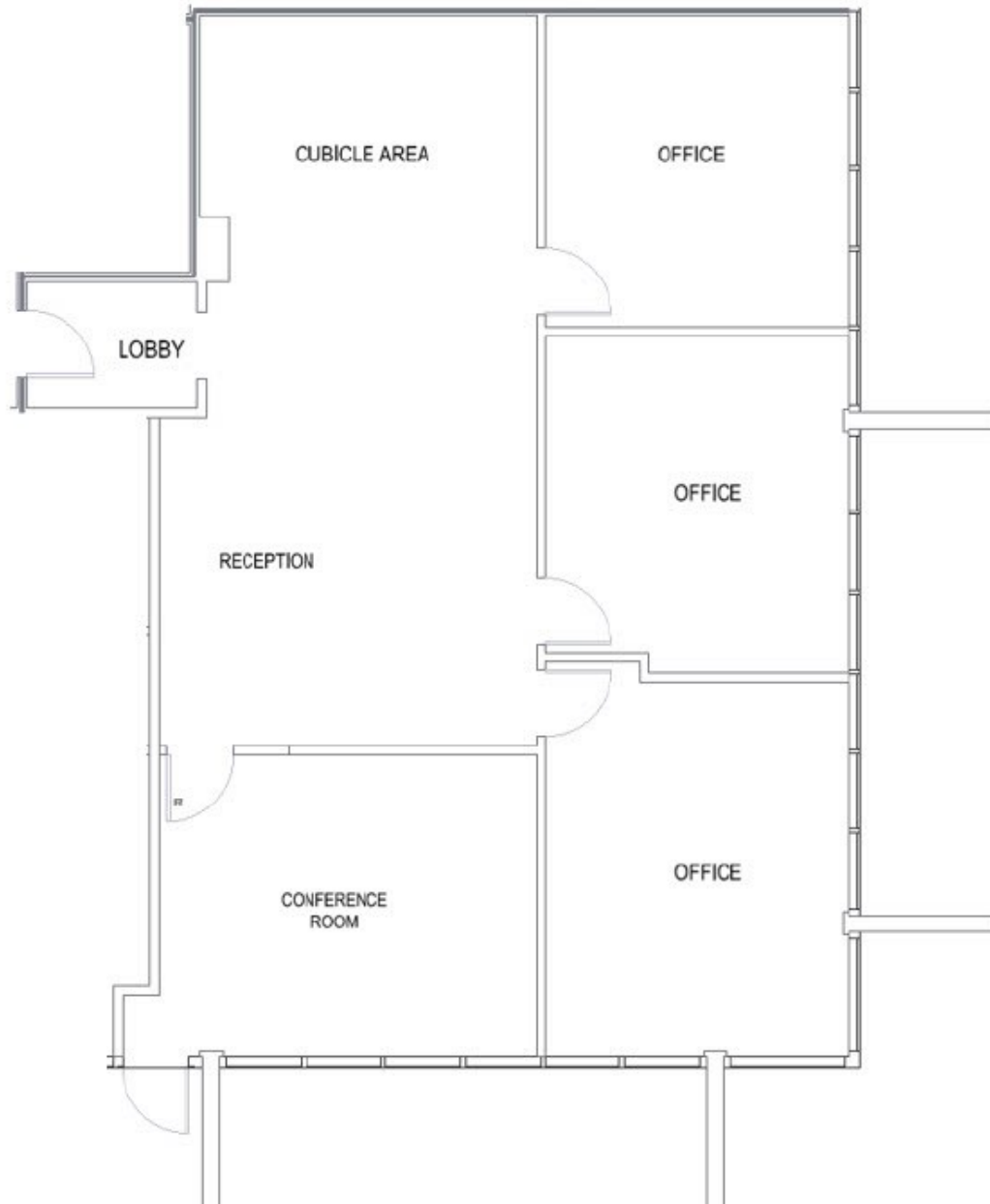
THE FITZGERALD GROUP
COMMERCIAL REAL ESTATE

For Lease

1800 Eller Drive
Fort Lauderdale, FL 33316



Suite 205 | 1,848 SF



Brad Fitzgerald
O: 954.760.9300
brad@fitzgeraldgroup.com

The Fitzgerald Group | Fort Lauderdale
1800 Eller Drive | Suite 212
Fort Lauderdale, FL 33316
www.fitzgeraldgroup.com



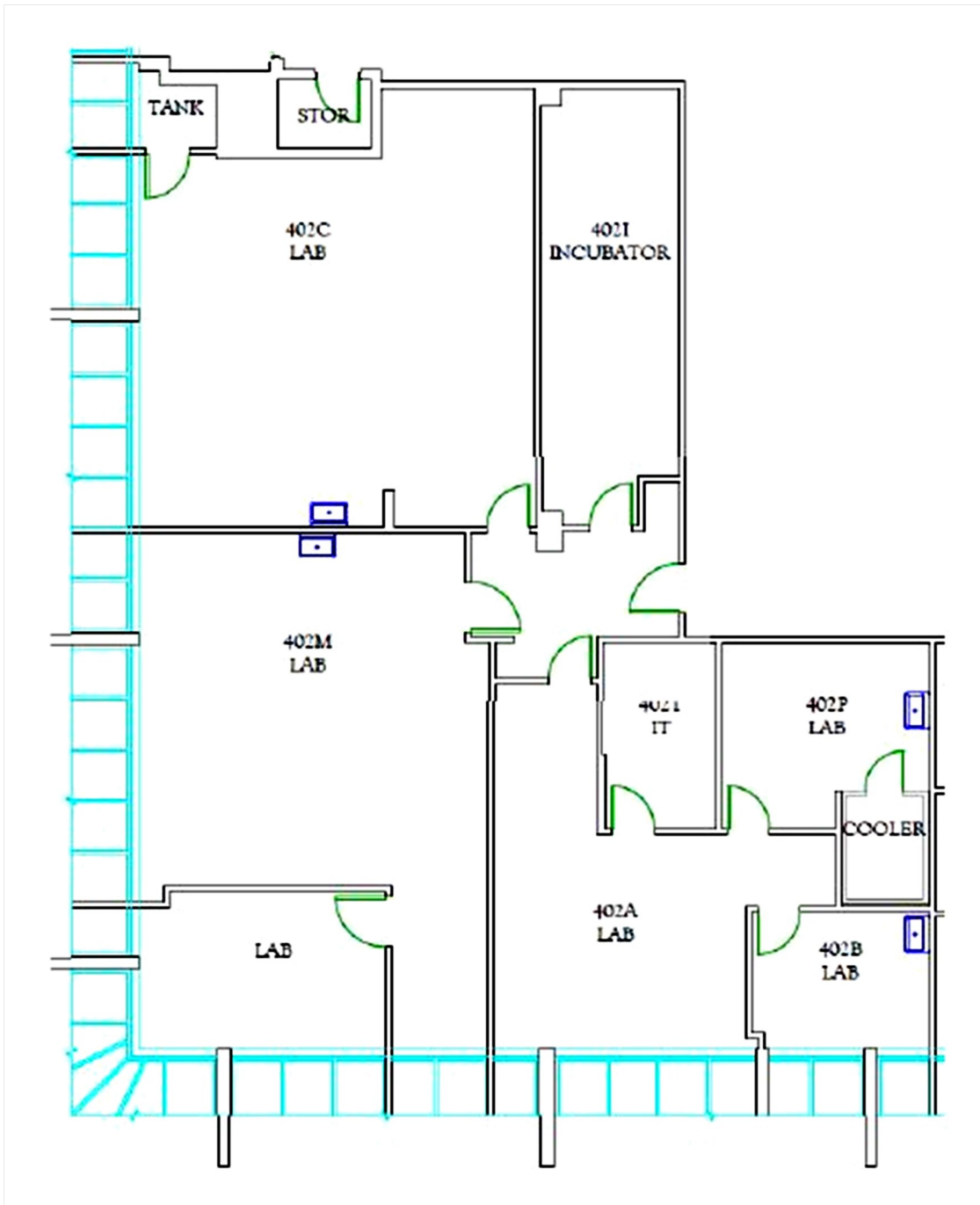
THE FITZGERALD GROUP
COMMERCIAL REAL ESTATE

For Lease

1800 Eller Drive
Fort Lauderdale, FL 33316



Suite 402 | 3,540 SF



Brad Fitzgerald
O: 954.760.9300
brad@fitzgeraldgroup.com

The Fitzgerald Group | Fort Lauderdale
1800 Eller Drive | Suite 212
Fort Lauderdale, FL 33316
www.fitzgeraldgroup.com



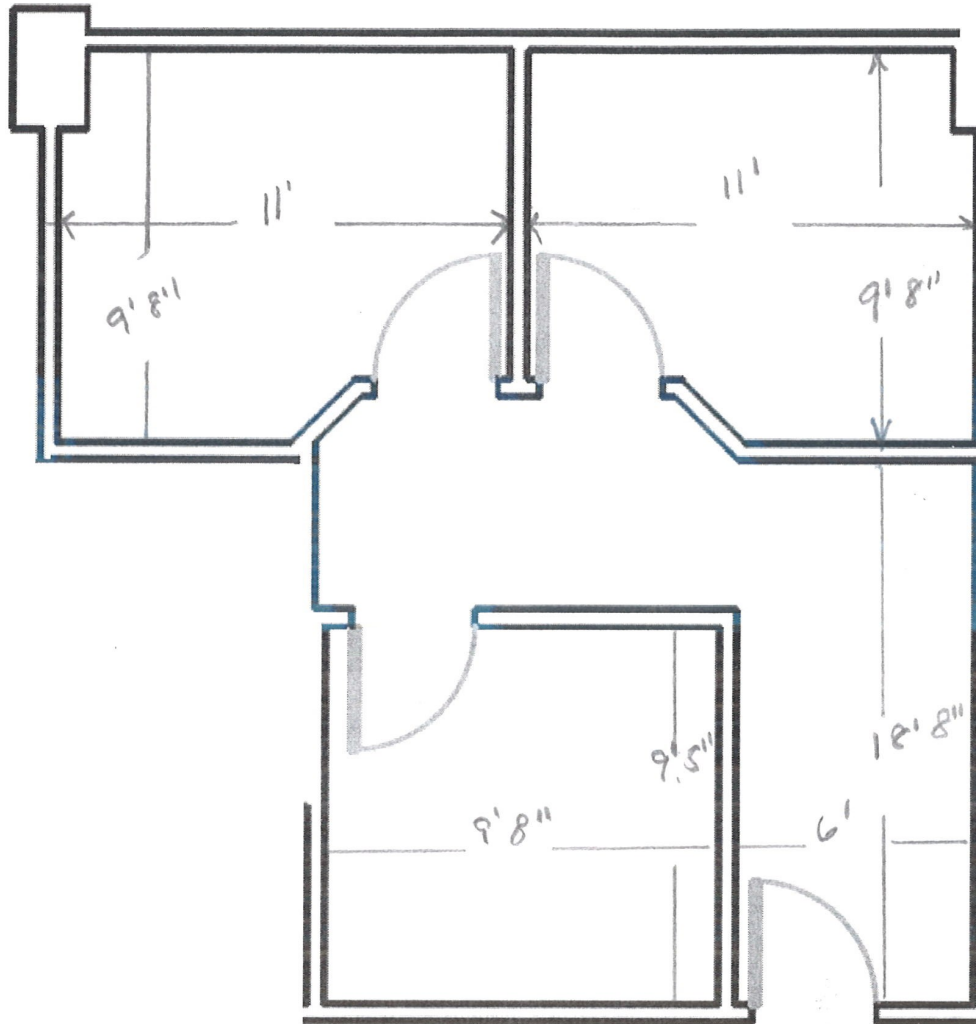
THE FITZGERALD GROUP
COMMERCIAL REAL ESTATE

For Lease

1800 Eller Drive
Fort Lauderdale, FL 33316



Suite 416 | 619 SF



Brad Fitzgerald
O: 954.760.9300
brad@fitzgeraldgroup.com

The Fitzgerald Group | Fort Lauderdale
1800 Eller Drive | Suite 212
Fort Lauderdale, FL 33316
www.fitzgeraldgroup.com



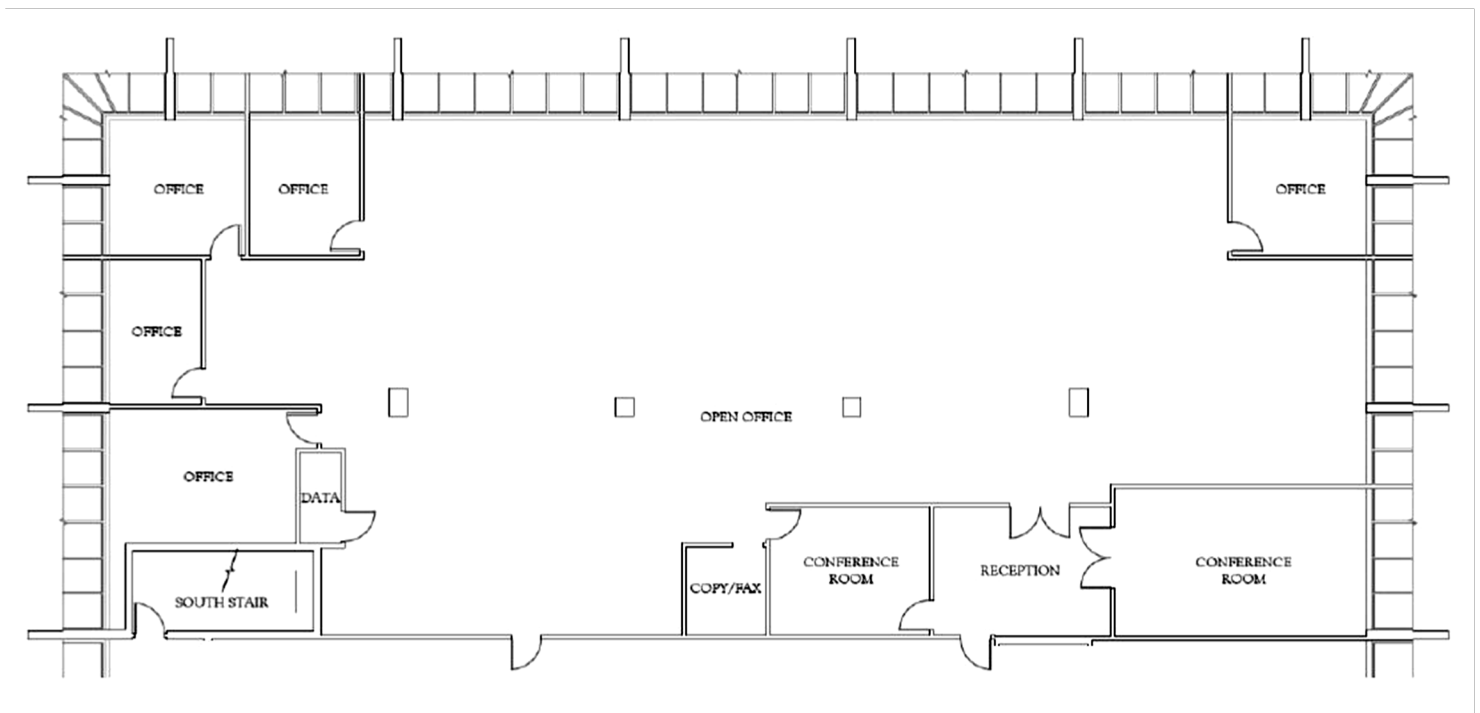
THE FITZGERALD GROUP
COMMERCIAL REAL ESTATE

For Lease

1800 Eller Drive
Fort Lauderdale, FL 33316



Suite 501 | 8,280 SF



Brad Fitzgerald
O: 954.760.9300
brad@fitzgeraldgroup.com

The Fitzgerald Group | Fort Lauderdale
1800 Eller Drive | Suite 212
Fort Lauderdale, FL 33316
www.fitzgeraldgroup.com



THE FITZGERALD GROUP
COMMERCIAL REAL ESTATE