

# For Lease

2419 E Commercial Blvd  
Fort Lauderdale, FL 33308



## CLASS A OFFICE SPACE | EAST FORT LAUDERDALE

Strategically located 3 story office building positioned on the corner of US-1 (Federal Highway) and East Commercial Boulevard.

### PROPERTY HIGHLIGHTS:

- ◆ Newly renovated with modern finishes throughout with brand new lobby area, elevator and common areas.
- ◆ Suites available from 1,105 SF to 7,438 SF.
- ◆ Above average parking ratio.
- ◆ Abundant amenities and transportation in immediate area.
- ◆ 15 Minute drive to Fort Lauderdale Hollywood Airport.
- ◆ Accessible within 15 minute drive to all major interstates (I-95, I-595, & FL Turnpike).

For Lease Information:

**Brad Fitzgerald**

O: 954.760.9300

[brad@fitzgeraldgroup.com](mailto:brad@fitzgeraldgroup.com)

**The Fitzgerald Group | Fort Lauderdale**  
1800 Eller Drive | Suite 212  
Fort Lauderdale, FL 33316  
[www.fitzgeraldgroup.com](http://www.fitzgeraldgroup.com)



**THE FITZGERALD GROUP**  
COMMERCIAL REAL ESTATE

Any information herewith is obtained from sources we consider reliable. However, we are not responsible for misstatement of facts, errors, omissions, prior sale, and withdrawal from market modification of mortgage commitment, terms and conditions or change in price without prior notice. The information supplied herein is for informational purposes only and shall not constitute a warranty of assurance that said information is correct. Any person intending to rely upon the information supplied herein should verify said information independently.

# For Lease

2419 E Commercial Blvd  
Fort Lauderdale, FL 33308



## Perencal Building Inventory

Suite 205	1,196 SF	\$19.50 PSF
Suite 207	2,552 SF	\$19.50 PSF
Suite 301	4,592 SF	\$19.50 PSF
Suite 302	2,153 SF	\$19.50 PSF
Suite 305	2,846 SF	\$19.50 PSF

***Operating Expenses are currently at \$13.40 PSF***



Brad Fitzgerald  
O: 954.760.9300  
brad@fitzgeraldgroup.com

The Fitzgerald Group | Fort Lauderdale  
1800 Eller Drive | Suite 212  
Fort Lauderdale, FL 33316  
www.fitzgeraldgroup.com



**THE FITZGERALD GROUP**  
COMMERCIAL REAL ESTATE

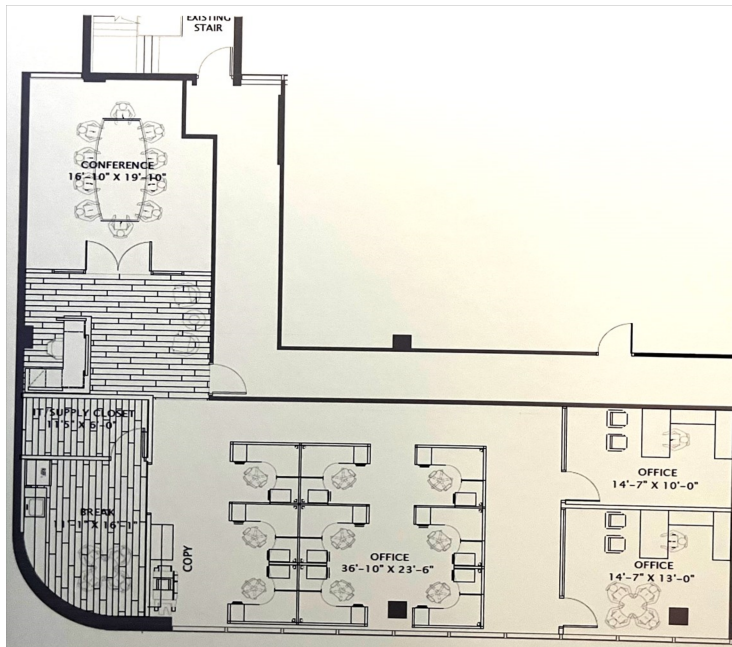
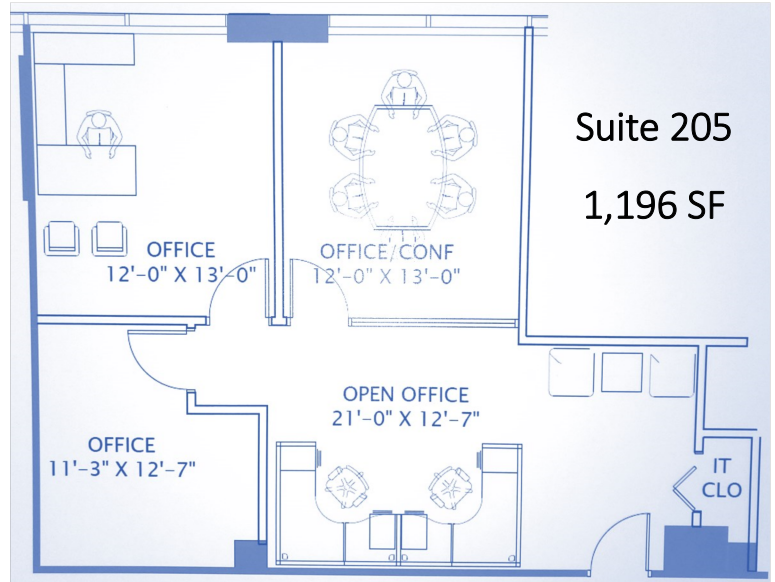
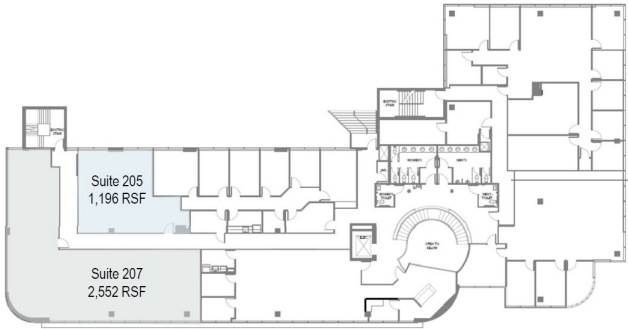
# For Lease

2419 E Commercial Blvd  
Fort Lauderdale, FL 33308



## Second Floor Space Available

Suite 205 - 1,196 SF | Suite 207 - 2,763 SF



Brad Fitzgerald  
O: 954.760.9300  
brad@fitzgeraldgroup.com

The Fitzgerald Group | Fort Lauderdale  
1800 Eller Drive | Suite 212  
Fort Lauderdale, FL 33316  
www.fitzgeraldgroup.com



**THE FITZGERALD GROUP**  
COMMERCIAL REAL ESTATE



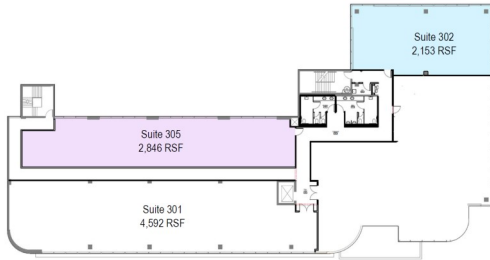
# For Lease

2419 E Commercial Blvd  
Fort Lauderdale, FL 33308

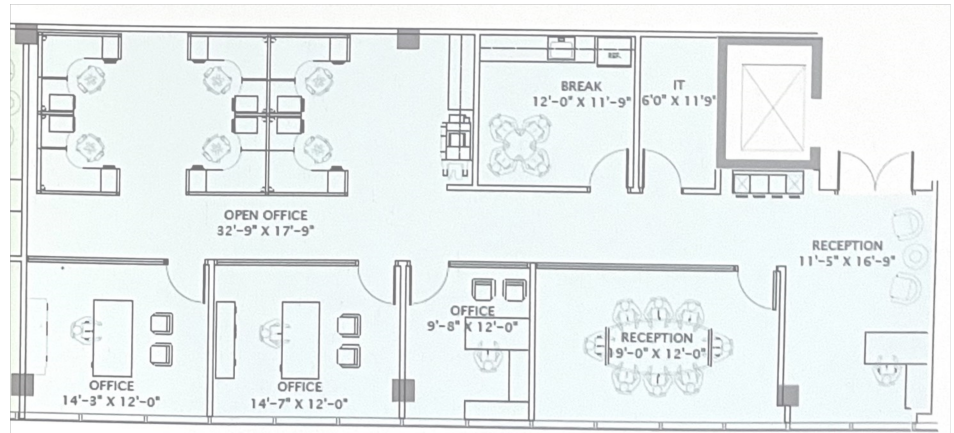


## Third Floor Space Available

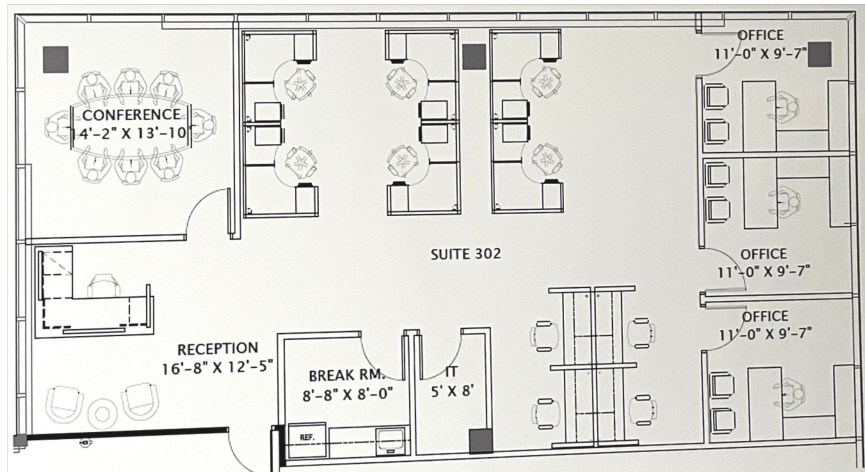
Suite 301 - 2,420 SF | Suite 302 - 2,153 SF | Suite 305 - 1,528 SF



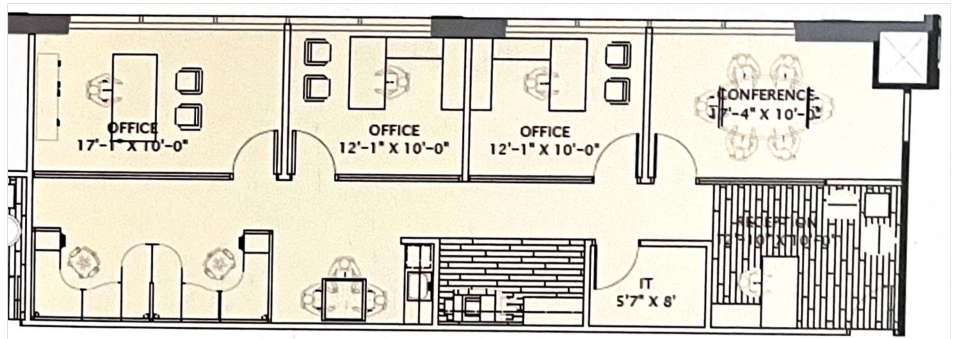
Suite 301 - 4,592 SF



Suite 302 - 2,153 SF



Suite 305 - 2,846 SF



Brad Fitzgerald  
O: 954.760.9300  
brad@fitzgeraldgroup.com

The Fitzgerald Group | Fort Lauderdale  
1800 Eller Drive | Suite 212  
Fort Lauderdale, FL 33316  
www.fitzgeraldgroup.com



**THE FITZGERALD GROUP**  
COMMERCIAL REAL ESTATE