

# For Lease

2419 E Commercial Blvd  
Fort Lauderdale, FL 33308



## CLASS A OFFICE SPACE | EAST FORT LAUDERDALE

Strategically located 3-story office building at the corner of US-1 (Federal Highway) and East Commercial Boulevard

### PROPERTY HIGHLIGHTS:

- ◆ Newly renovated with modern finishes throughout; brand new lobby area, elevator and common areas
- ◆ Suites available from 1,105 SF to 7,438 SF
- ◆ Above average parking ratio
- ◆ Abundant amenities and transportation in immediate area
- ◆ 15-minute drive to Fort Lauderdale Hollywood Airport.
- ◆ Accessible within 15-minute drive to all major interstates (I-95, I-595, & FL Turnpike)

For Lease Information:

**Richard Drennan**

O: 954.760.9300

M: 561.703.6666

[rich@fitzgeraldgroup.com](mailto:rich@fitzgeraldgroup.com)

**The Fitzgerald Group | Fort Lauderdale**  
2200 W Commercial Blvd. Ste.103  
Fort Lauderdale, FL 33309  
[www.fitzgeraldgroup.com](http://www.fitzgeraldgroup.com)



**THE FITZGERALD GROUP**  
COMMERCIAL REAL ESTATE

Any information herewith is obtained from sources we consider reliable. However, we are not responsible for misstatement of facts, errors, omissions, prior sale, and withdrawal from market modification of mortgage commitment, terms and conditions or change in price without prior notice. The information supplied herein is for informational purposes only and shall not constitute a warranty of assurance that said information is correct. Any person intending to rely upon the information supplied herein should verify said information independently.

# For Lease

2419 E Commercial Blvd  
Fort Lauderdale, FL 33308



## Perencal Building Inventory

Suite 205	1,105 SF	\$15.00 PSF
Suite 207	2,552 SF	\$15.00 PSF
Suite 301	2,420 SF	\$15.00 PSF
Suite 302	2,153 SF	\$15.00 PSF
Suite 305	1,528 SF	\$15.00 PSF

Rich Drennan  
O: 954.760.9300  
rich@fitzgeraldgroup.com

The Fitzgerald Group | Fort Lauderdale  
2200 W Commercial Blvd. | Suite 103  
Fort Lauderdale, FL 33316  
www.fitzgeraldgroup.com



**THE FITZGERALD GROUP**  
COMMERCIAL REAL ESTATE

# For Lease

2419 E Commercial Blvd  
Fort Lauderdale, FL 33308

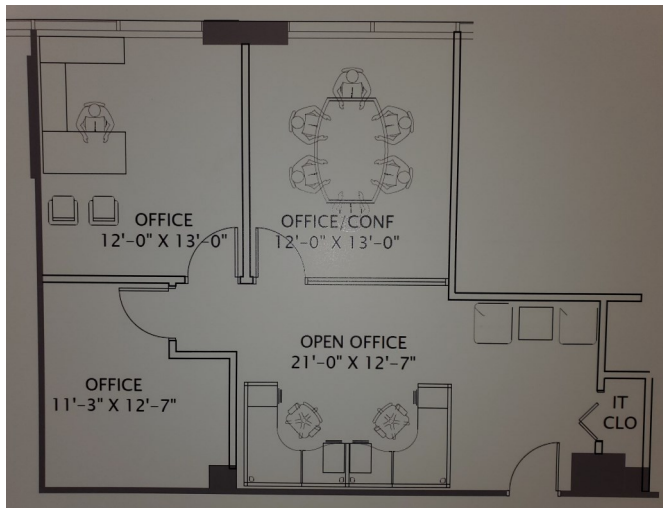


## Second Floor Space Available

Suite 205 – 1,196 SF | Suite 207 – 2,763 SF

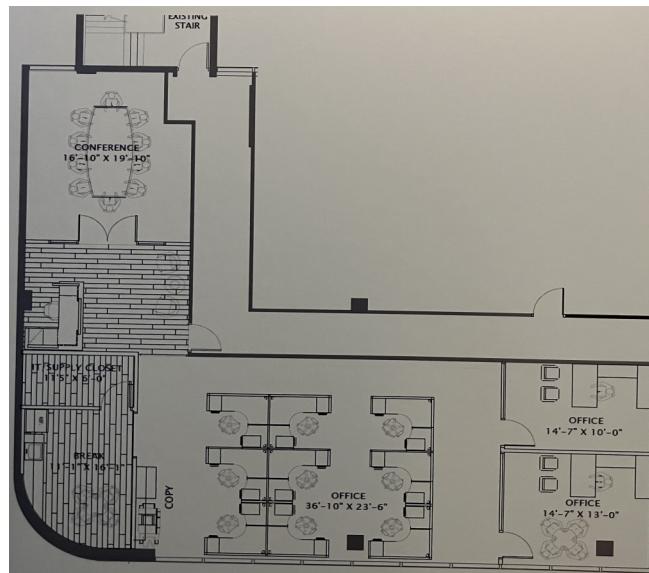
### Suite 205

1,105 SF



### Suite 207

2,763 SF



Rich Drennan  
O: 954.760.9300  
rich@fitzgeraldgroup.com

The Fitzgerald Group | Fort Lauderdale  
2200 W Commercial Blvd. | Suite 103  
Fort Lauderdale, FL 33309  
www.fitzgeraldgroup.com



**THE FITZGERALD GROUP**  
COMMERCIAL REAL ESTATE



# For Lease

2419 E Commercial Blvd  
Fort Lauderdale, FL 33308

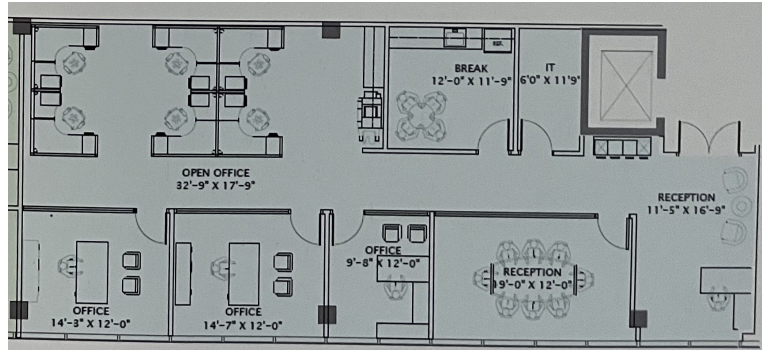


## Third Floor Space Available

Suite 301 – 2,420 SF | Suite 302 – 2,153 SF | Suite 305 – 1,528 SF

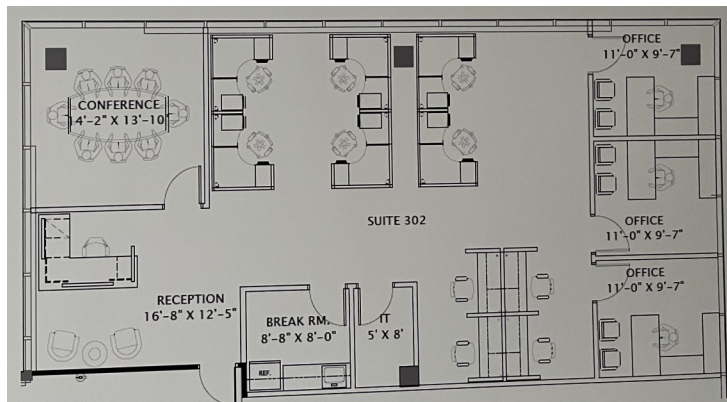
### Suite 301

2,420 SF



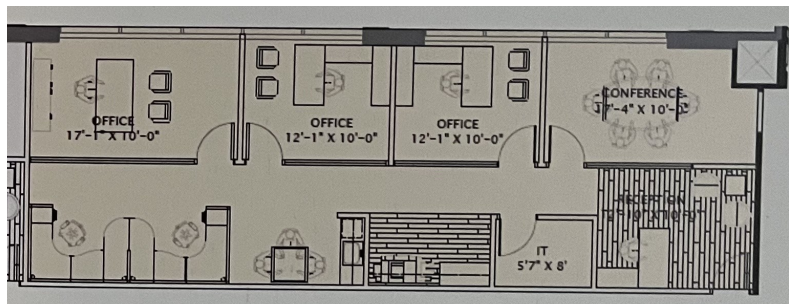
### Suite 302

2,153 SF



### Suite 305

1,528 SF



Rich Drennan  
O: 954.760.9300  
rich@fitzgeraldgroup.com

The Fitzgerald Group | Fort Lauderdale  
2200 W. Commercial Blvd. | Suite 103  
Fort Lauderdale, FL 33309  
www.fitzgeraldgroup.com



**THE FITZGERALD GROUP**  
COMMERCIAL REAL ESTATE